



SuiteTax Presentation for the RMNSAUG

James Karst & Kelsey VanArtsdalen

May 19, 2021



Wolters Kluwer

Speakers



James Karst
Solution Architect
Wolters Kluwer TAA NA



Kelsey VanArtsdalen
Solution Architect
Wolters Kluwer TAA NA

Agenda

Introduction

Legacy Tax Solution

SuiteTax Overview

When External Tax Engines are Needed

Migrating to SuiteTax

Questions



Wolters Kluwer

Legacy Tax Solution

Legacy Tax Solution

Functional limitations

- Default tax rates/tax codes based on 5-digit zip codes
- Limited to using one tax solution for all nexuses
- Limitations on configuration for item taxability
- No support for origin-based calculations
- Limited customer exemption rules

Technical limitations (Mostly a factor for integrated tax systems)

- Only one consolidated tax rate per line item which causes rounding and reconciliation issues
- Overriding taxes required custom suite scripts that regularly caused issues with other SDN solutions integrated with order processing. Additional suite scripts were required for other billing modules in NetSuite like SCA or SuiteBilling.

SuiteTax Overview

SuiteTax Key Benefits



Single platform delivering Sales Tax, VAT, and Withholding Tax

Multiple tax partners to choose from

Supports global operations including USA, Brazil, China, India

Enhanced tax determination logic

Multiple tax registrations per subsidiary

SuiteTax Key Functional Features

Multiple Tax Registrations

- Track individual tax registration numbers per subsidiary, entity
- VAT registration effective dates

Global Tax Tables

- Automated tax rates updates for 110 countries
- EU VAT ID and address validation
- Format validation for 20+ non-EU countries

Enhanced Tax Types

- Withholding tax
- Non-deductible VAT
- Reverse Charge VAT

Tax Reporting

- VAT returns, including editable templates
- Supplementary VAT reports
- Tax Point Date

USA Sales Tax

- Zip +4 determination
- Automated monthly rate updates
- Origin and destination based taxes
- Exemption certificate support

India GST & TDS

- Automatic tax determination for GST, TDS
- Simplified tax maintenance (Tax codes, Thresholds)
- GST and TDS Returns

SuiteTax Key Functional Features

Multiple Tax Registrations

- Track individual tax registration numbers per subsidiary, entity
- VAT registration effective dates

Subsidiary

[Edit](#)[Back](#)

Actions ▾

☐ SUBSIDIARY IS INACTIVENAME
Honeycomb Holdings Inc.☐ ALWAYS DISPLAY SUBSIDIARY NAME

SUBSIDIARY LOGO (FORMS)



SUBSIDIARY LOGO (PAGES)

WEB SITE
www.netsuite.comDOCUMENT NUMBER PREFIX
HHSTATE/PROVINCE
CaliforniaCOUNTRY
United StatesLEGAL NAME
SureTax - SuiteTax DemoRETURN EMAIL ADDRESS
phoenix@netsuite.com

FAX

☐ ELIMINATIONLANGUAGE
English (U.S.)CURRENCY
USAEDITION
US

FPMI (OVER IDENTIFICATION NUMBER (FIN)

INTERNAL ID
3[←](#) [→](#) List Subsidiary Settings[Addresses](#) [Vendor Bill Matching](#) [Tax Registrations](#) [Preferences](#) [Workflow](#) [Translation](#) [System Notes](#)

COUNTRY	TAX AGENCY	TAX REG. NUMBER	TAX ENGINE	EFFECTIVE FROM	VALID UNTIL
Canada	CANADA - CCH8 SureTax®	CCH8 SureTax® CA Tax Agency	CCH8 SureTax® Tax Engine Implementation	10/29/2020	
United States	UNITED STATES - CCH8 SureTax®	CCH8 SureTax® US Tax Agency	CCH8 SureTax® Tax Engine Implementation	10/29/2020	

[Edit](#)[Back](#)

Actions ▾

SuiteTax Key Functional Features

Global Tax Tables

- Automated tax rates updates for 110 countries
- EU VAT ID and address validation
- Format validation for 20+ non-EU countries

Pricing Schedules Transactions Tax Registrations Currencies Items											
COUNTRY	STATE	NEXUS	ADDRESS	TAX REG. NUMBER	EXEMPT	DEFAULT TAX CODE/GROUP	VALIDATION RESULT	NAME	ADDRESS FROM VIES	CONSULTATION NUMBER	DATE STAMP
United Kingdom		United Kingdom		GB391313073		GB_SR	Tax reg. number is valid.	ORACLE CORPORATION UK LIMITED	BUILDING 510, ORACLE PARKWAY, THAMES VALLEY PARK, READING, BERKSHIRE, , RG6 1RA	WAPIAAAAXCgQN5DA	03/03/2020 3:56:10 am
United Kingdom		United Kingdom		GB835586102			Tax reg. number is valid.	GRANT THORNTON UK LLP	FIRST FLOOR, 300 PAVILION DRIVE, NORTHAMPTON BUSINESS PARK, NORTHAMPTON, , NN4 7YE	WAPIAAAAXCgQi2CI	03/03/2020 3:57:36 am
United Kingdom		United Kingdom		GB766035327			Tax reg. number is valid.	BAKER TILLY INTERNATIONAL LTD	NEW BRIDGE STREET HOUSE, 30-34 NEW BRIDGE STREET, LONDON, , EC4V 6BJ	WAPIAAAAXCgRQI4w	03/03/2020 4:00:43 am

Edit

Back

Make Payment

Actions

CONSULTATION NUMBER	DATE STAMP
WAPIAAAAXCgQN5DA	03/03/2020 3:56:10 am
WAPIAAAAXCgQi2CI	03/03/2020 3:57:36 am
WAPIAAAAXCgRQI4w	03/03/2020 4:00:43 am

SuiteTax Key Functional Features

Enhanced Tax Types

- Withholding tax
- Non-deductible VAT
- Reverse Charge VAT

Tax Type

[Edit](#)[Back](#)[Actions ▾](#)

COUNTRY


United Kingdom

NAME

VAT_GB_RC

DESCRIPTION

Reverse Charge Tax Type for United Kingdom

- 
- ☐ DOES NOT ADD TO TRANSACTION TOTAL
 - ☐ POST TO ITEM COST
 - ☐ TAX INCLUDED IN NET AMOUNT
 - ☒ REVERSE CHARGE
 - ☐ REVERSE CHARGE FOR SALES
 - ☐ INACTIVE

Accounts System Notes

NEXUS	PAYABLES ACCOUNT	RECEIVABLES ACCOUNT
United Kingdom	Tax on Sales United Kingdom	Tax on Purchases United Kingdom

[Edit](#)[Back](#)[Actions ▾](#)

SuiteTax Key Functional Features

Tax Reporting

- VAT returns, including editable templates
- Supplementary VAT reports
- Tax Point Date

COUNTRY	REPORTS	Bundle ID
EMEA Localization SuiteApp	This is a pre-requisite for any EMEA tax reports	303903
UK	VAT 100 return (MTD), EC Sales and Intrastat	303970
Australia	Business Activity Statement (GST)	303913 SuiteTax Country Tax Reports JAPAC
New Zealand	GST return	
Philippines	Monthly VAT return, Quarterly VAT return Quarterly summary list of sales and purchases	
Singapore	GST return	
Belgium	VAT return, Annual Client Listing	307195
France	VAT return, DEBS - Intrastat goods declaration DES – EU Services declaration, FEC audit files	136446
Germany	VAT return, EU Sales List, Intrastat, GoBD audit files	255470
Ireland	VAT return, Return of Trading Details	Coming in Q2 2020
Netherlands	VAT return	307509
Sweden	VAT return	307400
India	TDS Returns support for Form 26Q and Form 27Q GST Returns support for GSTR-1 and GSTR-3B	255126 Bundle Provisioning Request required

SuiteTax Key Functional Features

USA Sales Tax

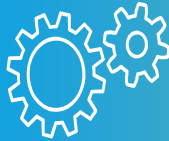
- Zip +4 determination
- Automated monthly rate updates
- Origin and destination based taxes
- Exemption certificate support



ITEM TAXABILITY RULES



EXEMPTION CERTIFICATES



NEXUS PREFERENCES



ENTITY TAX INFORMATION

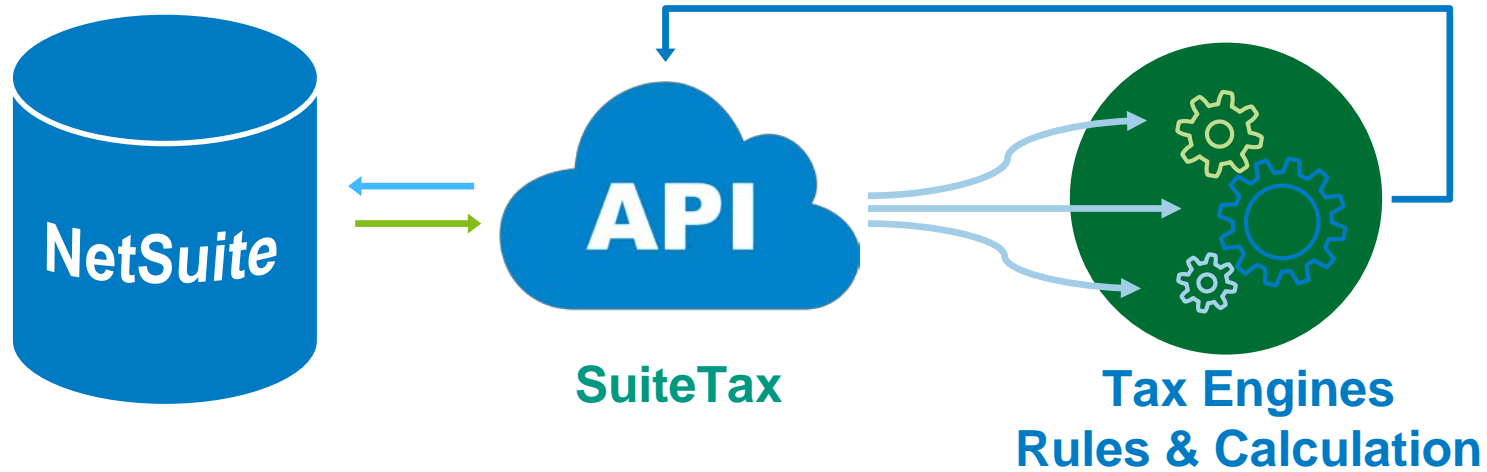
SuiteTax Key Functional Features

India GST & TDS

- Automatic tax determination for GST, TDS
- Simplified tax maintenance (Tax codes, Thresholds)
- GST and TDS Returns

New Tax Rate Rule		Customize View						
EDIT	SUBSIDIARY OR COMPANY REGISTRATION TYPE ▲	AVAILABLE ON	VENDOR OR CUSTOMER REGISTRATION TYPE	TAXABLE	HSN OR SAC CODE	GST RATE	FROM AMOUNT	CLASSIFICATION OF SUPPLY
Edit	Regular	Purchase Transactions	Regular	Yes	995456 Masonry services	18.00%		Intra-State Supply
Edit	Regular	Sales Transactions	Regular	Yes	995456 Masonry services	18.00%		Inter-State Supply
Edit	Regular	Purchase Transactions	Regular	Yes	995431 Demolition services	12.00%		Intra-State Supply
Edit	Regular	Sales Transactions	Regular	Yes	995416 Construction services of other buildings nowhere else classified	18.00%		Inter-State Supply
Edit	Regular	Purchase Transactions	Regular	Yes	995456 Masonry services	18.00%		Inter-State Supply
Edit	Regular	Sales Transactions	Regular	Yes	995454 Concrete services	28.00%		Inter-State Supply
Edit	Regular	Sales Transactions	Regular	Yes	995416 Construction services of other buildings nowhere else classified	18.00%		Intra-State Supply
Edit	Regular	Sales Transactions	Regular	Yes	995456 Masonry services	18.00%		Intra-State Supply

SuiteTax Technical Benefits



[Activities](#)[Transactions](#)[Lists](#)[Reports](#)[Analytics](#)[Documents](#)[Setup](#)[Customization](#)[Support](#)

Nexus

[Save](#)[Cancel](#)[Reset](#)

COUNTRY

United States

STATE/PROVINCE/COUNTY

Alabama

DESCRIPTION *

United States - Alabama

PARENT NEXUS

☐ INACTIVE☐ USE FULFILLMENT TO MODIFY TAX POINT DATE

TAX AGENCY

Alabama Department of Revenue_1



Nexus Preferences

[Compliance Text](#)[System Notes](#)

Tax Registrations Validation Preferences

☐ DISALLOW INVALID ENTITY TAX REGISTRATION NUMBER

Tax Rounding Preferences

TAX ROUNDING METHOD

Round Off

TAX ROUNDING PRECISION

.01 and below

Tax On Discounts

☐ CALCULATE TAX BEFORE DISCOUNT IS APPLIED[Save](#)[Cancel](#)[Reset](#)

Item Taxability

ORACLE NETSUITE

Search



Activities

Transactions

Lists

Reports

Analytics

Documents

Setup

Customization

Support

Item Non-taxability Rule

Save

Cancel

Reset

Delete

Primary Information

COUNTRY *

United States

NEXUS *

United States - Alabama

Items

☐ VALIDITY DATES

VALID FROM

VALID UNTIL

SELECT ITEM SAVED SEARCH

COPY FROM NEXUS

Clear All

ITEM NAME/NUMBER *

VALID FROM

VALID UNTIL

Gentleman Suit

Mini skirt

Red blouse

1/1/2019

12/31/2019

Fancy dress

1/1/2019

12/31/2019

Transaction Form Changes



2 Haskell Associates

PAID IN FULL

← → List Search

Edit Back Authorize Return Credit Renew Actions

Primary Information

INVOICE # 2
CUSTOMER Haskell Associates
DATE 11/9/2019
POSTING PERIOD Nov 2019
DUE DATE 12/8/2019

PO #
MEMO

Summary	
SUBTOTAL	445.00
DISCOUNT ITEM	
TAX TOTAL	13.76
US_STATE_SALES	13.76
US_NL	0.00
TOTAL	458.76
AMOUNT DUE	0.00

Items Shipping Billing Accounting Tax Details Communication Related Records System Information GL Impact Tax Reporting

DISCOUNT ITEM RATE

ITEM	BACK ORDERED	QUANTITY	DESCRIPTION	PRICE LEVEL	RATE	AMOUNT	GROSS AMT	OPTIONS	TAX AMOUNT	EXCLUDE ITEM FROM RATE REQUEST	STATISTICAL VALUE	TAX DETAILS REFERENCE
First Aid To Go	0	10	First Aid To Go	Base Price	3.00	30.00	31.88		1.88			209_1
General Repair Tool Kit	0	5	General Repair Tool Kit	Base Price	45.00	225.00	225.00		0.00			209_2
4-Cell Primary Battery for Dell Latitude E7240	0	2	4-Cell Primary Battery for Dell Latitude E7240	Base Price	95.00	190.00	201.88		11.88			209_3

Edit Back Authorize Return Credit Renew Actions

Transaction Form Changes

Items

Shipping

Billing

Accounting

Tax Details

Communication

Related Records

System Information

GL Impact

Tax Reporting

NEXUS
United States MA
☐ NEXUS OVERRIDE

SUBSIDIARY TAX REG. NUMBER
844332677 (United States MA, United States)

☐ TAX DETAILS OVERRIDE
CUSTOMER TAX REG. NUMBER
US987654421
TAX POINT DATE
11/9/2019 ☐ OVERRIDE

Taxes •

TAX DETAILS REFERENCE	LINE TYPE	NAME	NET AMOUNT	TAX TYPE	TAX CODE	TAX BASIS	TAX RATE	TAX AMOUNT	DETAILS
209_1	Item	First Aid To Go	30.00	US_STATE_SALES	US_MA_STATE_SALES_1	30.00	6.25%	1.88	
209_2	Item	General Repair Tool Kit	225.00	US_NL	US_MA_NL	225.00	0.0%	0.00	
209_3	Item	4-Cell Primary Battery for Dell Latitude E7240	190.00	US_STATE_SALES	US_MA_STATE_SALES_1	190.00	6.25%	11.88	



Edit

Back

Authorize Return

Credit

Renew

  Actions ▾

Printed Invoice

SuiteTax International 2019.2.12.01.19

Invoice
#40
02/28/2020

Bill To
KMCe Corporation
9283 Stonybrook Ave.
New York NY 10032
United States

Ship To
KMCe Corporation
9283 Stonybrook Ave.
New York NY 10032
United States

TOTAL

\$1,758.27
Due Date: 03/28/2020

Terms	Due Date	PO #	Sales Rep	Shipping Method
	03/28/2020	PO#24578		

Quantity	Item	Rate	Amount	Tax Rate	Tax Amount	Gross Amt
10	3M Ear muffs 3M Ear muffs	\$23.00	\$230.00	8.88%	\$20.41	\$250.41
10	Alkaline AAA Batteries Pack of 24 - Case of 6 Alkaline AAA Batteries Pack of 24 - Case of 6	\$99.00	\$990.00	8.88%	\$87.86	\$1,077.86
10	Ergonomic mouse pad Ergonomic mouse pad	\$43.00	\$430.00	0%	\$0.00	\$430.00

Tax Type	Tax Code	Tax Basis	Tax Rate	Tax Amount
US_COUNT Y_SALES	US_NY_NEW YORK COUNTY_COUNTY_SALES_ 1	\$1,220.00	4.5%	\$54.90
US_COUNT Y_SALES	US_NY_NEW YORK COUNTY_COUNTY_SALES_ 2	\$1,220.00	0.38%	\$4.57
US_STATE_S ALES	US_NY_STATE_SALES_2	\$1,220.00	4%	\$48.80
US_NL	US_NY_NL	\$430.00	0%	\$0.00
Total				\$108.27

Subtotal	\$1,650.00
Tax	\$108.27
Total	\$1,758.27

Customer Exemption Certificates

ORACLE NETSUITE

Search



Help



Feedback



Iva N Dolejsova
Sales Tax Engine DEMO [5275933] - Administrator



Activities

Transactions

Lists

Reports

Documents

Setup

Customization

Support

US Exemption Certificate

More

Save

Cancel

Reset

Delete

CUSTOMER *

Industry Manufacturing

STATE *

California

CERTIFICATE NUMBER *

015568-2

VALID FROM

4/1/2018

VALID UNTIL

3/31/2019

NOTES

Manufacturing

ATTACHMENT

Choose File No file chosen

ITEMS

☒ APPLY TO ALL ITEMS (BLANKET CERTIFICATE)

SELECT ITEM SAVED SEARCH

Add Items

COPY FROM OTHER CERTIFICATE

82-0112764582-C01

Add Items

Clear All

Save

Cancel

Reset

Delete

Transaction Form Changes

ItemsShippingBillingAccountingTax DetailsCommunicationRelated RecordsSystem InformationGL ImpactTax Reporting

NEXUS
United States MA
☐ NEXUS OVERRIDE
SUBSIDIARY TAX REG. NUMBER
844332677 (United States MA, United States)

☐ TAX DETAILS OVERRIDE
CUSTOMER TAX REG. NUMBER
US987654421
TAX POINT DATE
11/9/2019 ☐ OVERRIDE

Taxes

TAX DETAILS REFERENCE	LINE TYPE	NAME	NET AMOUNT	TAX TYPE	TAX CODE	TAX BASIS	TAX RATE	TAX AMOUNT	DETAILS
209_1	Item	First Aid To Go	30.00	US_STATE_SALES	US_MA_STATE_SALES_1	30.00	6.25%	1.88	
209_2	Item	General Repair Tool Kit	225.00	US_NL	US_MA_NL	225.00	0.0%	0.00	
209_3	Item	4-Cell Primary Battery for Dell Latitude E7240	190.00	US_STATE_SALES	US_MA_STATE_SALES_1	190.00	6.25%	11.88	

Edit

Back

Authorize Return

Credit

Renew

Actions

Tax detail overrides allow the user to manually change values:

- When the vendor has charged different taxes compared to what the tax engine calculates. e.g rounding
- When taxes were already calculated in another system and need to be imported as-is

When External Tax Engines are Needed

Industry Verticals with Taxability Needs

- Software & Software Services
- Rental & Leasing of TPP
- Clothing
- Maintenance / Warranty Contracts
- Installation or Repair Services for TPP
- Professional and Data Services
- Digital Media
- Manufacturing



Verticals Continued...

Other Content add-ons:

- Food & Beverage (grocery items)
- Restaurant
- Telecommunications
- Energy or Utilities
- Vehicle Sales & Leasing
- Cannabis
- Construction



Additional Needs to Look for

- Nexus Determination
- Tiers & Thresholds
- Tax Holidays
- Discounts
- Procure to Pay
- Unit Type
- Customer Types
- Exemptions & Certificate Management

Tax Return Filing

View Return - 2100A

104% v

ALABAMA DEPARTMENT OF REVENUE
SALES AND USE TAX DIVISION
PO BOX 327790, MONTGOMERY AL 36132-7790

Form: 2100
MAT Confirmation:

Alabama Sales Return

ACCOUNT NUMBER: [] REPORT FOR THE PERIOD OF: Feb 2021 DATE FILED: 03/12/2021 DUE DATE: 03/20/2021

Name: SA COMPANY
Address: 123 MAIN STREET PHILADELPHIA PA 19101

	COLUMN A Farm/Mfg. 1.50%	COLUMN B Auto 2.0%	COLUMN C Vend. Mach. 3.0%	COLUMN D Vapor Prod. 4.0%	COLUMN E All Other 4.00%
1. Gross sales, amusements, and withdrawals	0.00				131,829.00
2. Total Deductions	0.00				5,950.00
3. Total amount remaining as measure of tax	0.00	0.00	0.00	0.00	125,879.00
4. Gross Tax (line 3 x rate shown at heading)	0.00	0.00	0.00	0.00	5,035.16
5. Automotive withdrawal fee (For Automobile Dealers Only) No. of Demos. _____ withdrawn					0.00
6. TOTAL AMOUNT OF TAX (total line 4 cols. A, B, C, D, E and Line 5)					5,035.16
7. LESS: Discount - 5% on \$100 or less in tax and 2% on tax over \$100 (May not exceed \$400.00)					0.00
8. LESS: Estimate Paid on last month's return					
9. PLUS: Estimate Due for current month					
10. TOTAL TAX DUE (line 6 minus lines 7 and 8 plus line 9)					5,035.16
11. PLUS: Penalty and interest, if due (see instructions)					0.00
12. PLUS: Amounts overcollected					0.00
13. LESS: Credit Claimed. Any credit for prior overpayment must be approved in advance by Department of Revenue.					
14. TOTAL AMOUNT DUE (line 10 plus lines 11 and 12 minus line 13)					5,035.16

< 1/1 >

E-file without payment Interest: ☒ ☐
Late File Penalty: ☐

Migrating to SuiteTax

Migrating to SuiteTax

How do you migrate to SuiteTax?

- Any new or current NetSuite user can migrate
- Contact your NetSuite account manager & complete the enhancement request form

SUITETAX QUALIFYING QUESTIONNAIRE

Note: This information is required in order for the NetSuite SuiteTax team to assess if your account is suitable for SuiteTax enablement. There may be other areas of the product that are not yet compatible with SuiteTax so please ensure you answer the questions fully and accurately.

Completion of this questionnaire does not guarantee SuiteTax enablement.

Enablement in a Sandbox account does not guarantee access in a production account.

NETSUITE ACCOUNT INFORMATION		
Are you a new or existing customer?		Existing customer means production account with transactions
Company Name		
Sandbox Account ID (if you have one)		
NetSuite Production Account ID		
Which account do you want SuiteTax enabled in - Production or Sandbox?		We strongly recommend enablement and testing in a sandbox account first

COUNTRIES AND SUITETAX PARTNER		
List the key countries that you operate in and have tax requirements for using NetSuite		This helps us understand your requirements and assess if there are other dependencies like localization in some countries

CONFIGURATION: ENABLE SUITETAX

Setup > Company > Enable Features

SUITETAX:

Enables SuiteTax for entire account and initiates migration for past three years of transactions.

As of 2019.1, SuiteTax feature is hidden unless provisioned by NetSuite Support.

Enable Features

Save

Cancel

Reset

Company

Accounting

Tax

Transactions

Items & Inventory

Employees

CRM

Analytics

Web Presence

SuiteCl

Tax & Compliance

☒ ADVANCED TAXES

TRACK TAXES FOR MULTIPLE NEXUSES, AND USE TAX SCHEDULES TO DETERMINE THE TAX TREATMENT OF ITEMS SOLD IN EACH NEXUS.

☐ EU MINI ONE STOP SHOP

TRACK TAXES FOR EU DIGITAL SERVICES

☒ SUITETAX

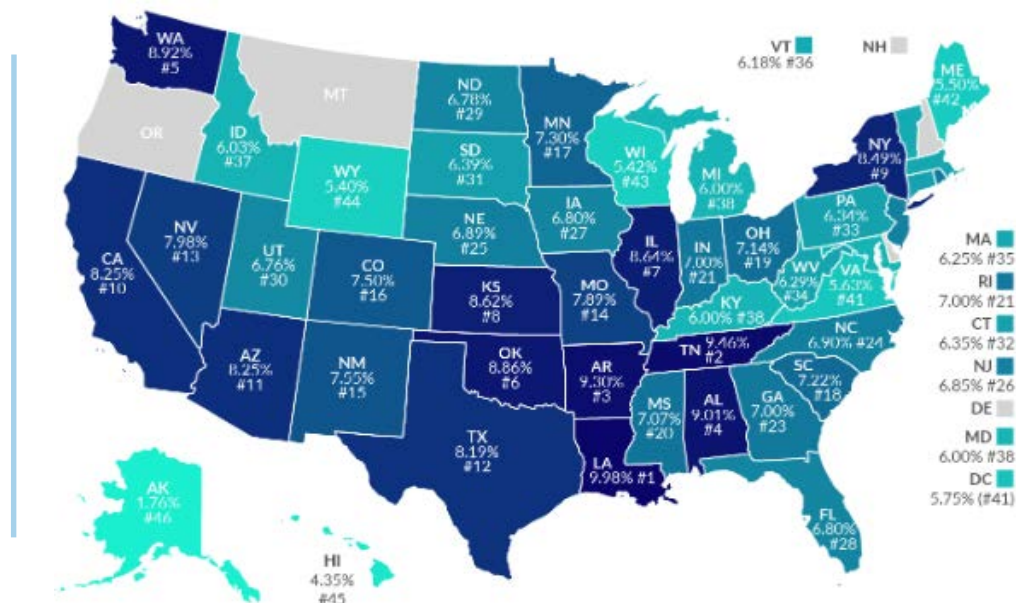
DEFINE DIFFERENT TAX ENGINES FOR DIFFERENT TAX JURISDICTIONS, VISUALIZE TAX DETAILS ON EACH TRANSACTION. THIS FEATURE REQUIRES INSTALLATION OF A THIRD-PARTY IMPLEMENTATION OF THE SUITETAX PLUG-IN.

WARNING: Unlike other features, SuiteTax is a non-reversible feature and therefore there are several factors that you should take account of before proceeding.

Automated Data Provisioning

Tax Engine automatically creates:

- Tax codes and types:
 - State
 - County
 - City
 - District
- Tax groups (group tax codes valid for zip+4 location)
- Tax agencies
- Tax accounts



To Learn More

TaxNA.WoltersKluwer.com/SalesTax

SalesTaxPartners@WoltersKluwer.com

